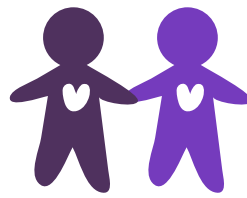


**GLOBAL 2017 HIGHLIGHTS**

**↑ OVERALL PERFORMANCE** **\$18.3 BILLION** IN NET SALES



EXCEEDED  
**4.3 MILLION**  
LIVES IMPACTED TARGET  
THROUGH SOCIAL PROGRAMS



TOTAL GLOBAL DONATIONS AND  
COMMUNITY INVESTMENTS  
**\$26 MILLION**



**89%** ENVIRONMENTALLY-PREFERRED  
FIBER (EPF) IN OUR TISSUE PRODUCTS



WE'VE INCREASED THE AMOUNT OF FSC® CERTIFIED  
VIRGIN FIBER IN OUR TISSUE PRODUCTS FROM  
**7%** IN 2006 **TO MORE THAN 84%** IN 2017



DIVERTED **95%** OF MANUFACTURING  
WASTE FROM  
LANDFILL



DIVERTED MORE THAN  
**15,000 MT**  
OF PCW WASTE



AWARDED 5<sup>TH</sup> CONSECUTIVE  
**EPA SMARTWAY  
TRANSPORTATION  
AWARD**



REDUCED ABSOLUTE  
GHG EMISSIONS BY  
**18%**  
FROM A 2005 BASELINE



GLOBAL TOTAL  
REPORTABLE  
INCIDENT RATE OF **0.19**



WATERSHED ANALYSIS INITIATED AT  
**5 OF 12** WATER STRESSED  
OPERATIONS